

Daniel Spielman  
Joinery





## Daniel Spielman Joinery

Daniel is a craftsman designing and building custom objects including interior and exterior furniture, architectural joinery, functional artwork and heirloom pieces.

Daniel's designs are guided primarily by a Japanese idiom, with influences extending to Australian, American, Korean and European traditions. The Japanese term shibusa has come to describe a tautness of line, a quiet-feeling and directness evoking timelessness and the imagination of the viewer – a philosophy embedded in Daniel's work. All timber species, however, have different characteristics and call for techniques that have arisen from different environments and cultures. A curiosity about all of these interactions characterises the design process.

Primarily working in timber, Daniel has access to a rare stock of heritage Australian and international species. Conscious of the value inherent in low-impact materials, he also uses sustainably managed furniture-grade species, reclaimed timbers and best-practise sustainable timber products such as Accoya. Daniel also works in other diverse materials including cast bronze and stone elements.

Relationships form a vital part of Daniel's practise. Primarily, the relationship with a client is what motivates the unique nature of each piece. With over 20 years' experience across construction, landscape, set building and joinery in Australia and the US, Daniel regularly consults with a community of craftspeople, designers, architects, artists and builders, representing some of the best knowledge and expertise available. These longstanding relationships form a network of resources and discussion around design concepts and challenges and are characterised by inquiry and enthusiasm. Within this community the pleasure of making objects with presence or elegant utility is a common value.

All pieces are made to order. Commissions are welcome at Daniel's workshop in Kew, Victoria.

enquiries@danielspielmanjoinery.com  
+61 474 157 817





**Huon Flower Press**

Huon pine, walnut, nectarine, holly, oregon, brass and slate





**Myrtle Flower Press**

Myrtle, nectarine, jarrah, American maple, Queensland red cedar and sandstone



**Saul's Table**  
American cherry













**Table after Nakashima**  
American rock maple and red gum











**Large Maple Table**  
American rock maple











**Credenza One**  
White oak and walnut





















**Harp Outdoor Table**  
Accoya

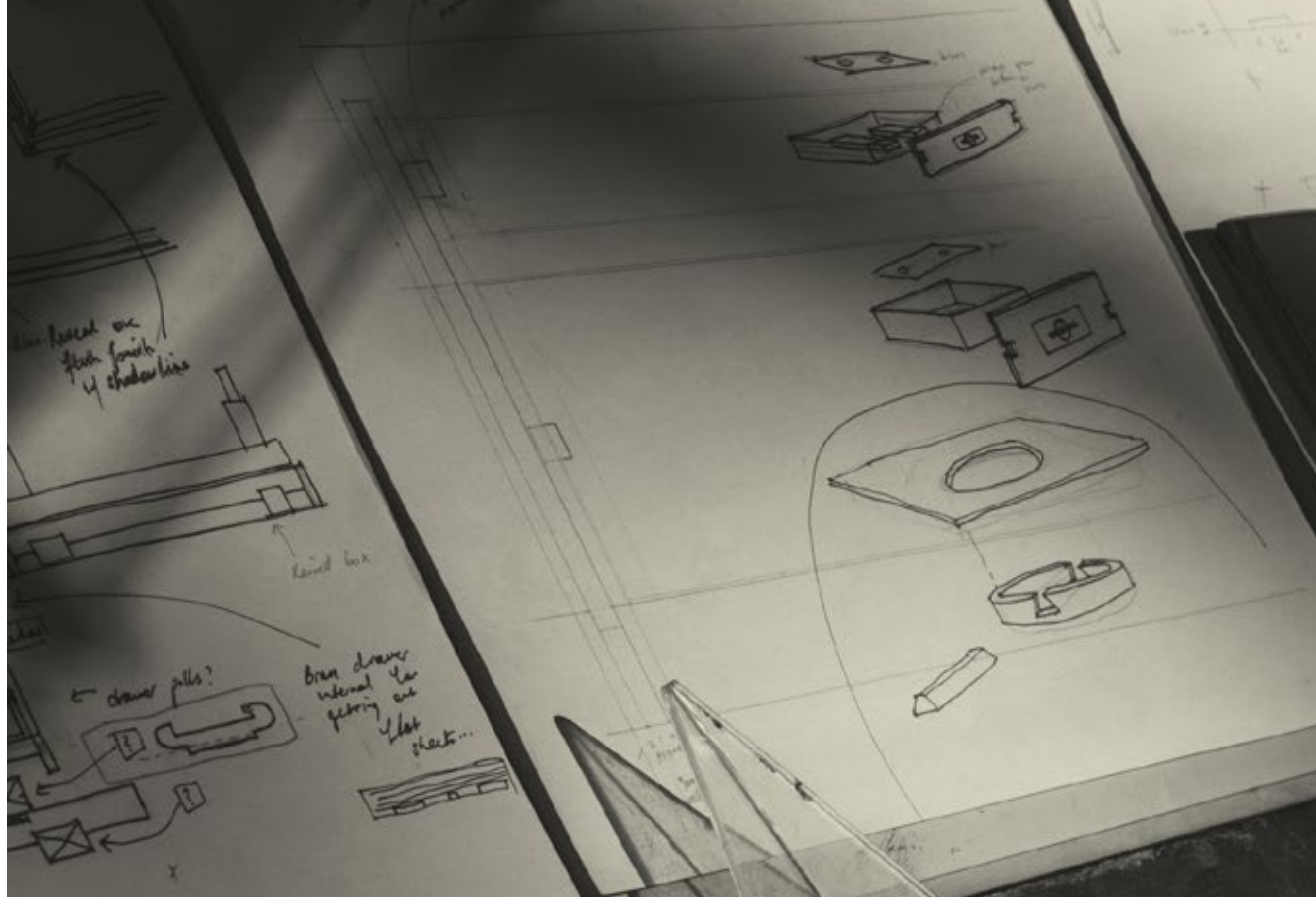








GENERAL DRAWINGS  
DESIGN FOR DETAILS



level on  
floor finish  
of chamber line

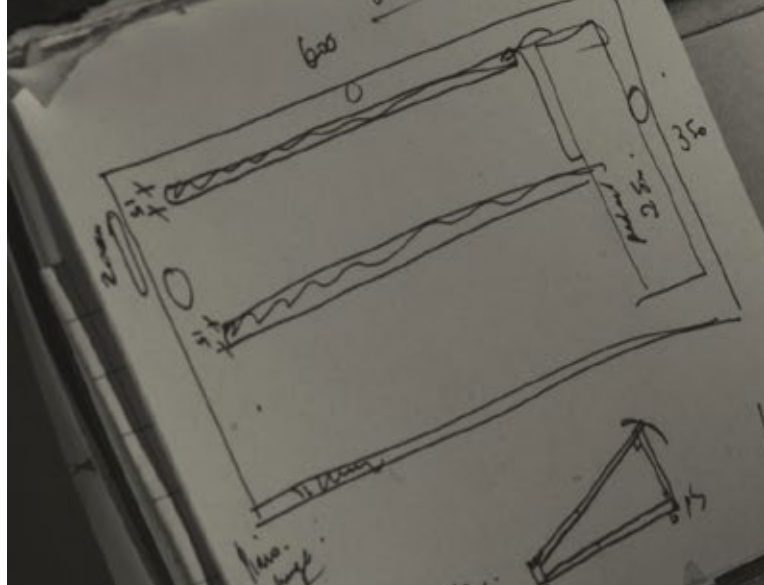
level box

← drawer pulls?

brass drawer  
internal for  
getting out  
of slot  
sheet...



JOHN PEDAL STAND



10mm



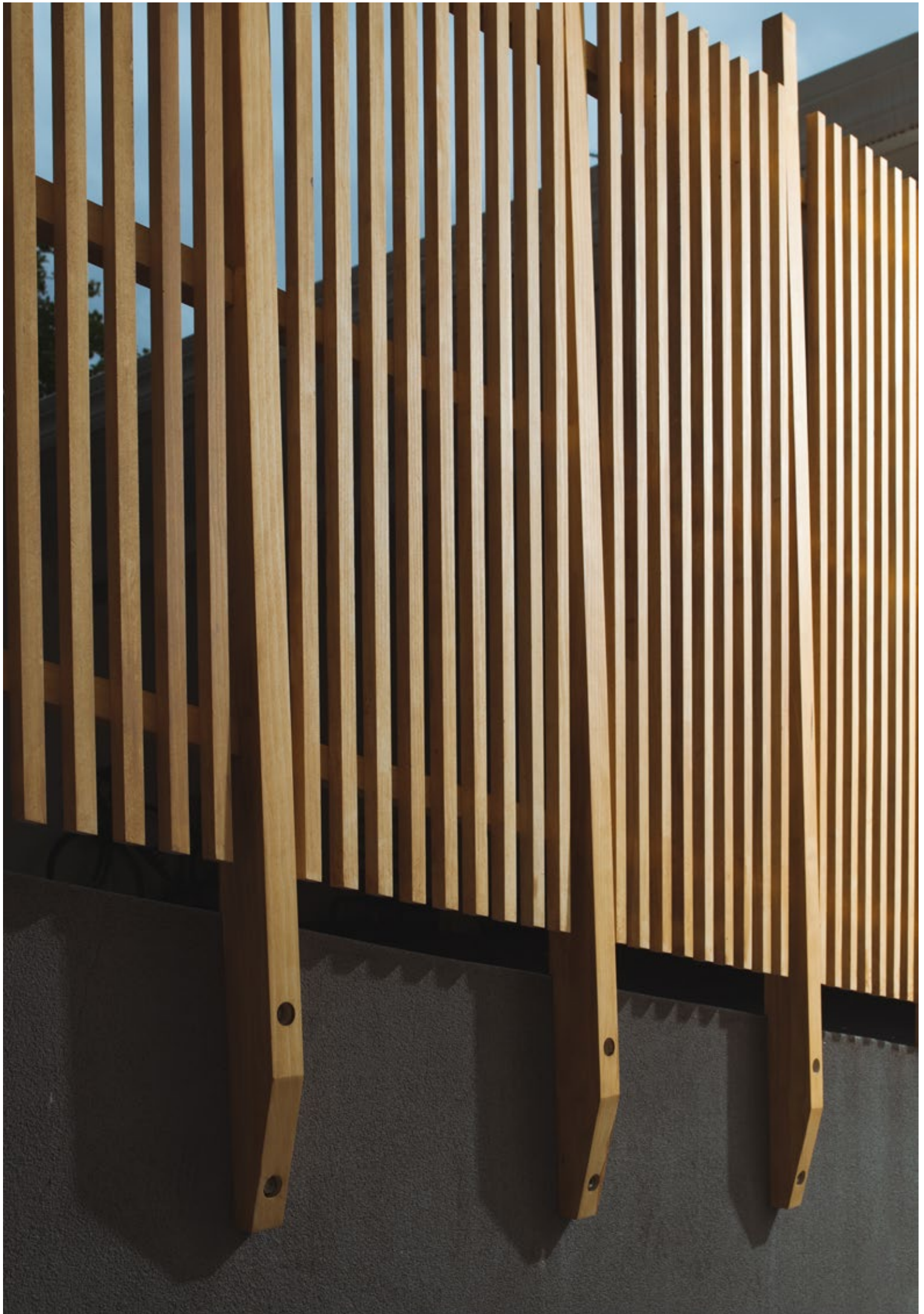


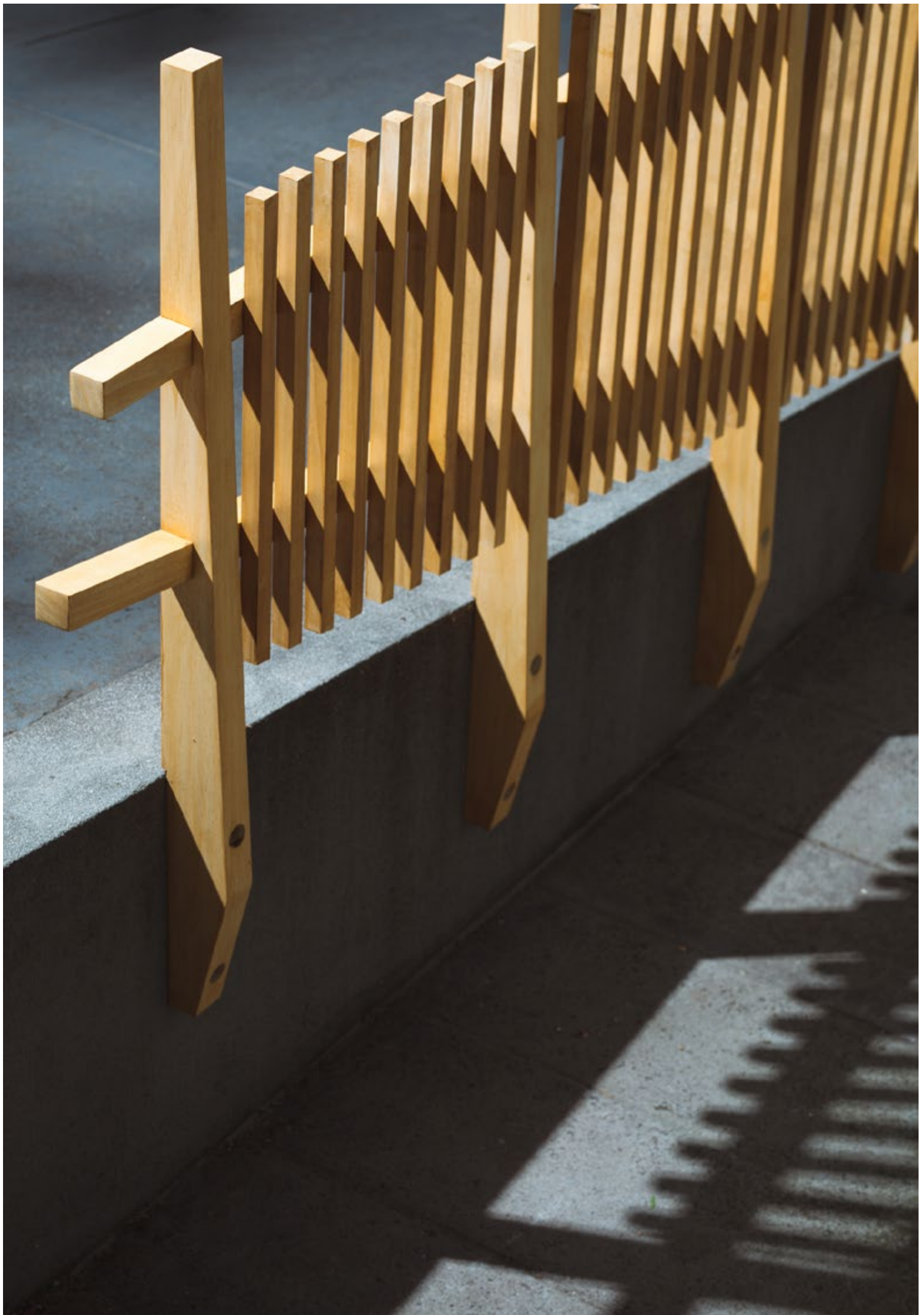


**Accoya Screen**  
Accoya

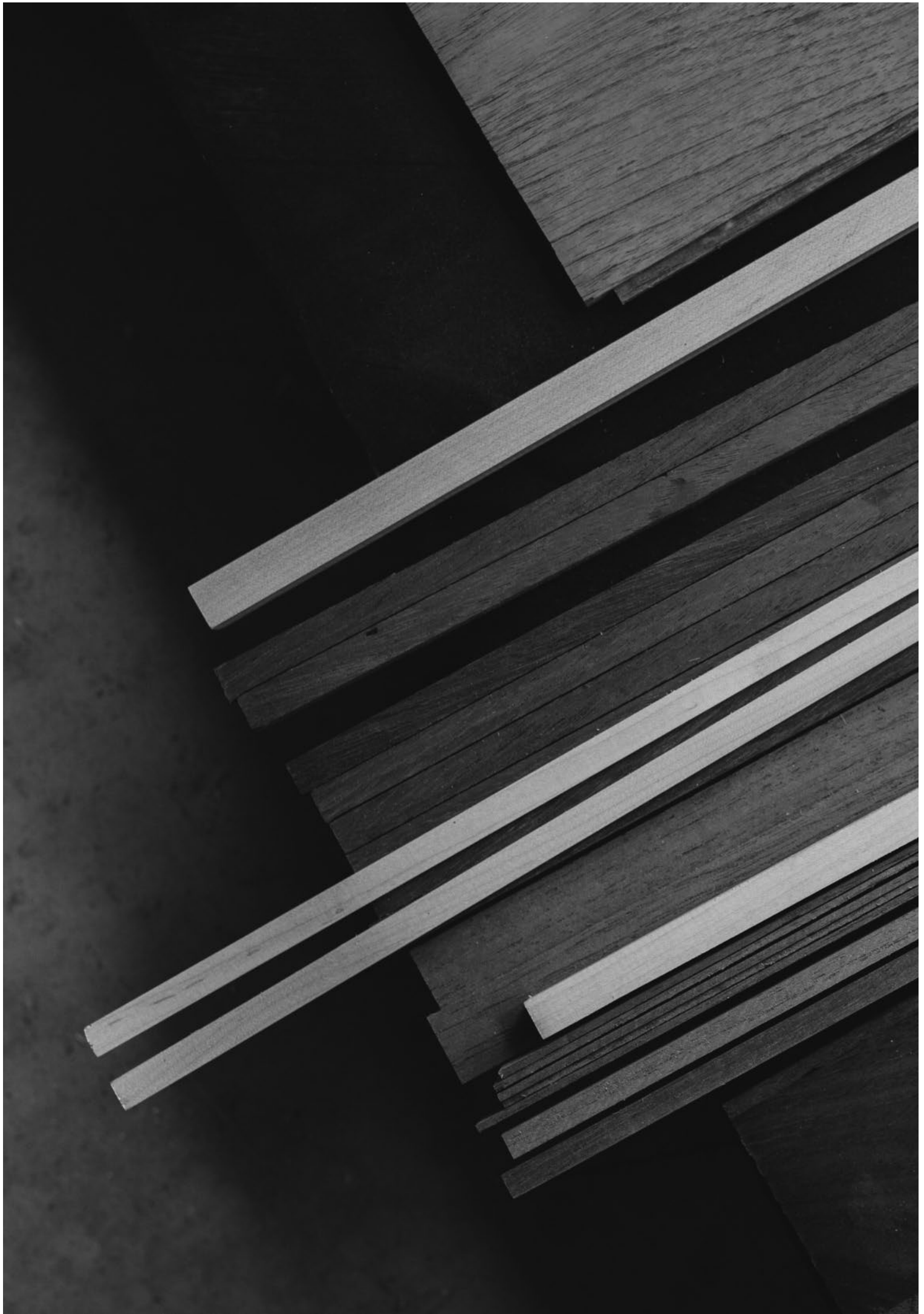














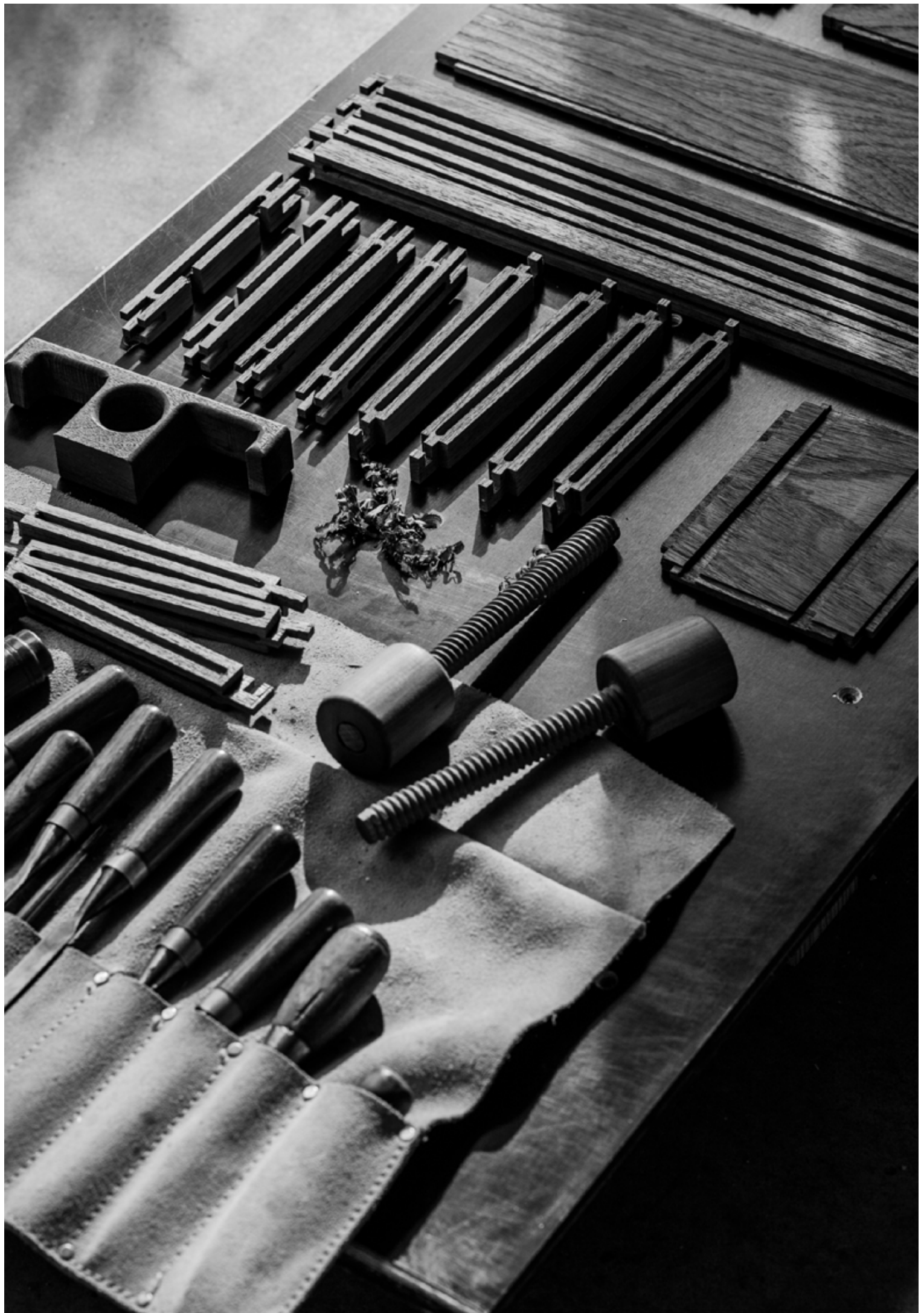
**Onggi Pottery Kick-wheel**  
Jarrah, redgum, bronze, stainless steel













## **Turpentine Bench**

Turpentine, rammed concrete, stainless steel















**Daniel Spielman Joinery**

[www.danielspielmanjoinery.com](http://www.danielspielmanjoinery.com)  
[enquiries@danielspielmanjoinery.com](mailto:enquiries@danielspielmanjoinery.com)  
+61 474 157 817

Photography: Pier Carthew  
[www.piercarthew.com](http://www.piercarthew.com)

I acknowledge that I live and work on the land of the Wurundjeri people of the Kulin nations, and that sovereignty has never been ceded. I pay my respects to Elders, families and forebears past, present and emerging.